



Joson-Care 2024

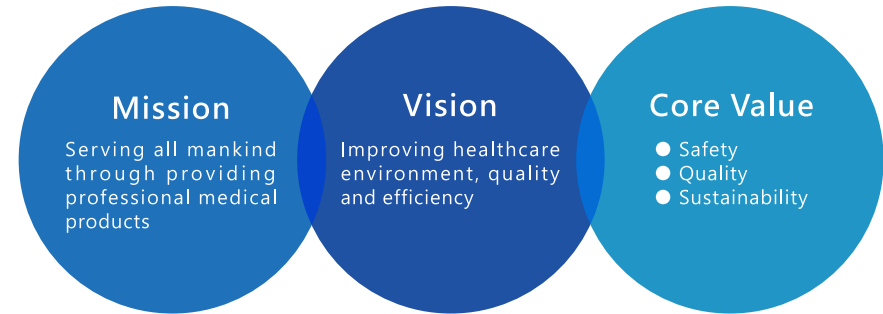


Safety Quality Sustainability





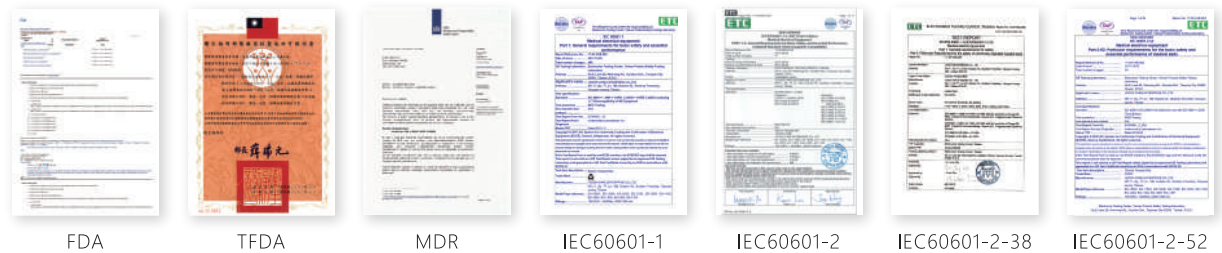
Business
Concept

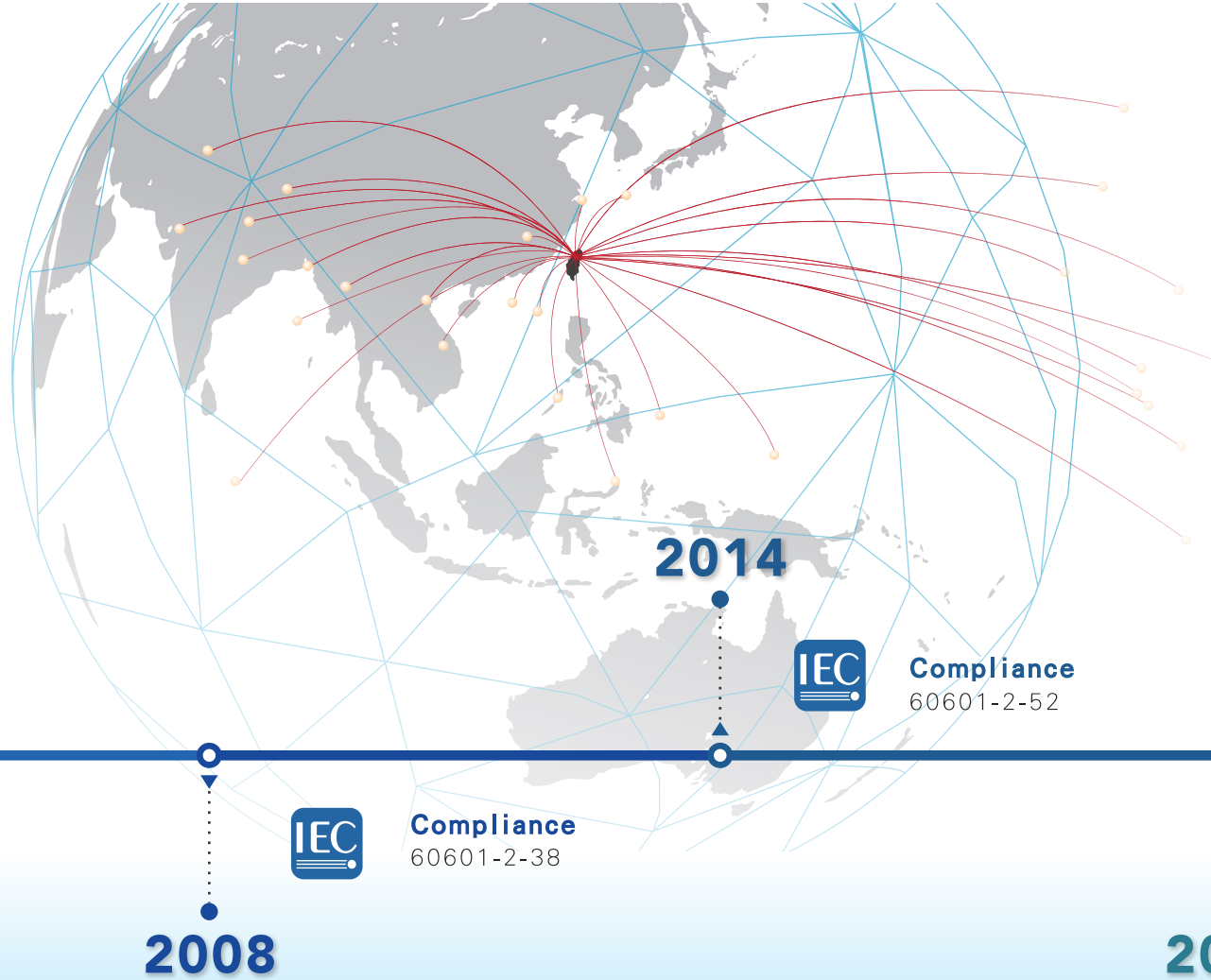


History



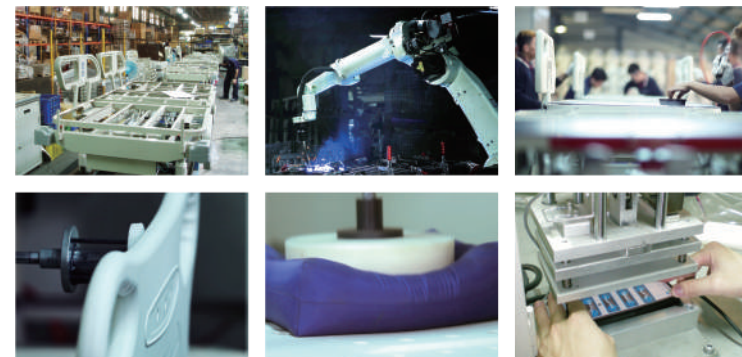
Established in 2000, Joson-Care Co., Ltd. is Taiwan's premier manufacturer of hospital beds and ward equipment. We uphold rigorous quality control standards to deliver exceptional accuracy, durability, and reliability, while maximizing the use of renewable resources.





So far, we have sold our products to more than 40 countries. Such as U.S.A, Japan, France, South Korea, India, Iran, Panama, Thailand, Turkey and U.A.E.

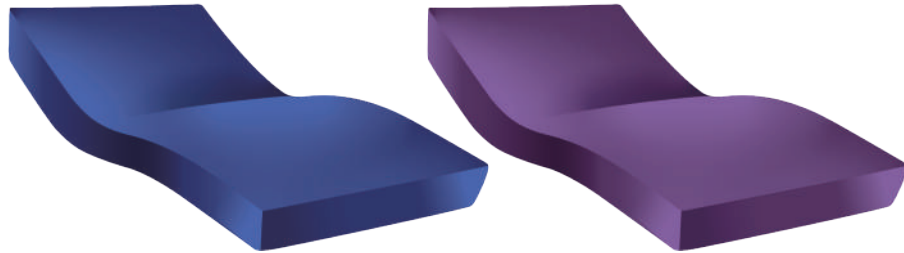
Joson-Care's manufacturing system is meticulously designed to adhere to ISO 13485 and Quality Management System (QMS) standards. This rigorous approach ensures that our processes consistently deliver high-quality products, precisely meeting and often exceeding customer expectations for safety, performance, and reliability.



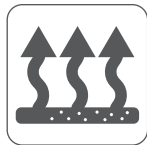
Mattress

JS-301, JS-302, JS-303

Mattress cover: Nylon



■ BS



Ventilation



Waterproof

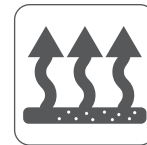


Flame Retardant



Anti Bacterial

■ CA



Ventilation

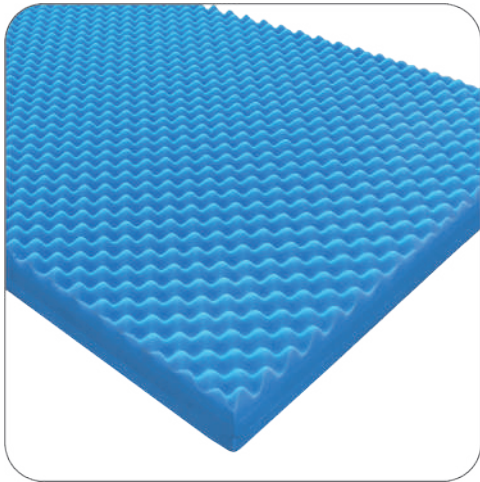


Waterproof

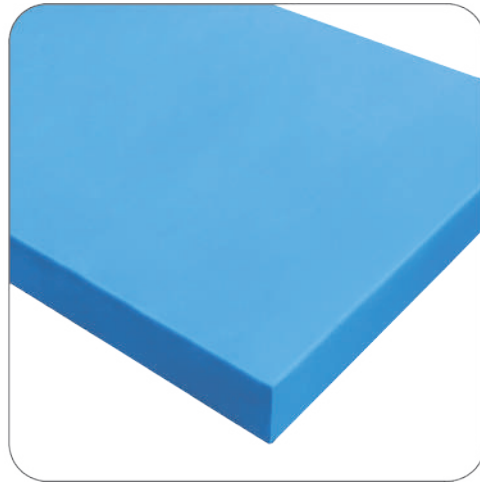


Flame Retardant

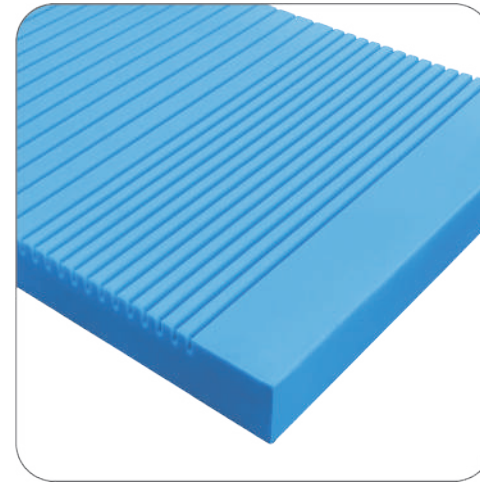
High-Density Foam



JS-301



JS-302



JS-303

Specification	JS-301		JS-302		JS-303	
Model	JS-301BS	JS-301CA	JS-302BS	JS-302CA	JS-303BS	JS-303CA
Mattress cover	■	■	■	■	■	■
Fire safety standard	BS-7177	CA-117	BS-7177	CA-117	BS-7177	CA-117
Anti-bacterial	✓		✓		✓	

JT-100

Orthopedic Traction Frame



Triangle Ring Set



Pulley Mounting Set



Foot Support Unit



Support Rod Set



1. The traction frame is suitable for all series of Joson-Care's bed and installed in four IV Pole holder.
2. The bottom of the frame is made by solid stainless steel bars.
3. Switching the wrench could quickly adjust the frame, it's tools free to set the frame.
4. The traction frame includes one set of triangular ring and pulley.
5. The octagonal pipes are made of aluminum.
6. Two sets of reinforcing units are helping to reinforce the traction frame.
7. Adjustable height and length of triangle ring set can avoid patient being impacted while position changed.

IV Stand



JR-016 IV Stand

Size : H1630~2300mm
Frame : Stainless 304#



JR-018 Stackable IV Stand

Size : 1335~2169mm
Frame : Chrome Plated steel



K5000-MS 2 Claws IV Pole

Size : 855~1510mm
Frame : Chrome Plated steel



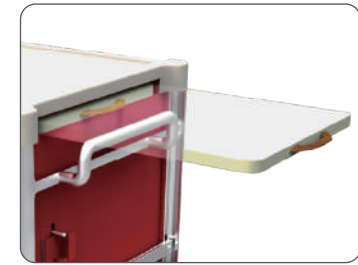
K4000-MS 4 Claws IV Pole

Size : 1020~1760mm
Frame : Chrome Plated steel

JA-107

Emergency Cart

Overall Size : L735 x W560 x H990mm
Table Surface Size : 380 x 817 mm
Drawers size : 60 x 9 x 15 : ±1 cm



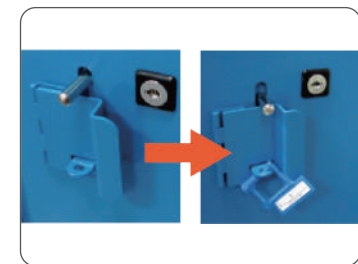
Laptop Drawer
(390 x 380mm)



Trash Bin(9 liters)
(W277 x H182 x D390mm)



Cardiac Board
(L700 x W400 x D15mm)



Disposable Lock

- Frame: Steel
- Cover: ABS
- A buckle fixed design which prevent drawers sliding out.
- Key and disposable lock available.
- Vertical and horizontal divider included.
- Flexible confuguration design.
- 2 sets divider quipe in both 3" and 6" drawers.

Accessories Option



Storage Box
(W600 x H304 x D124mm)



IV Pole
(1020~1760mm)



Suction Tube Holder
(W90 x H480 x D90mm)



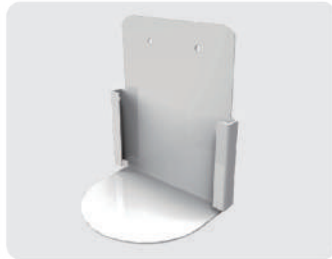
Oxygen Tank Holder
(W125 x H370 x D175mm)



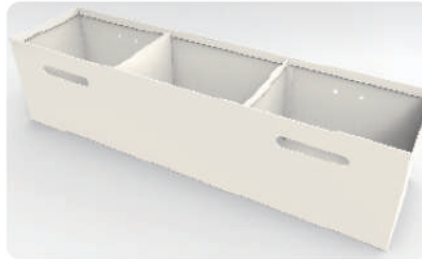
Pedal Trashbin(30 liters)
(W311 x H406 x D500mm)



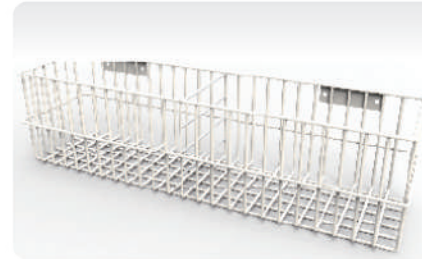
Hand Sanitizer Holder
(Including hand sanitizer bottle)
(W75 x H105 x D77mm)



Syringe Collection Box Holder
(W130 x H150 x D90mm)



Plastic Bin Holder
(W480 x H120 x D120mm)



Smesh Bin Holder
(W488 x H125 x D125mm)



Glove Dispenser

UD Medical Cart



Medical Cart



JO-103 Mayo Table

Size : L485 x W325 x H800~1200mm
Frame : Stainless 304#



JA-108 Dressing Trolley

Size : L600 x W450 x H850mm
Frame : Stainless 304#

JA-111 Utility Cart

Size : L600 x W450 x H850mm
Frame : Stainless 304#



JF-014

Bedside Cabinet



Size : L460 x W460 x H860mm
 Color : Blue / Pink
 Material: ABS

Outpatient Equipment



JR-017 Screen

Size : W750 x H1800mm
 Frame : Stainless 304#
 Cloth : 65% tricot & 35% rayon

JO-104 Pedal

Single Size : L400 x W300 x H250mm
 Double Size : L400 x W600 x H440mm
 Frame : Stainless 304#
 Surface : Anti-slip Plastic Board



Overbed Table

JR-032 Overbed Table

Size : L815 x W403 x H820~1225mm
 Frame : Powder coated steel
 Table Surface : flame-retardant laminate
 Max. Loading : 20KG



Gas spring driven design



2" lockable castor*4
 2 with brake



JR-011 Overbed Table

Size : L765 x W385 x H720~1120mm
 Frame : Powder coated steel
 Table Surface : flame-retardant laminate

JR-051 Overbed Table

Size : L845 x W400 x H780~1050mm
 Package : L880 x W465 x H165mm
 Frame : Powder coated steel
 Table Surface : flame-retardant laminate
 Max. Loading : 20KG



Y0307-SY Overbed Table

Size : L890~1060 x W320 x H30mm
 Frame : ABS plastic
 Tube : Aluminum
 Hooks on the backside.

Doctor Chair



JO-107 Doctor Chair

Size : Ø380mm · H510~660mm
 Seat: PU Foam
 Frame: Aluminum



JO-109 Doctor Chair

Size : Ø300mm · H500~670mm
 Frame : Stainless 304#



JO-108 Doctor Chair

Size : Ø380mm · H510~660mm
 Seat: PU Foam
 Frame: Aluminum

Caregiver Recliner



JD-010 Caregiver Recliner

Size : 600 x 800 x 950mm
 600 x 1850mm (Extended)

Frame : Stainless 304#
 Cushion : High density foam
 Cover : Synthetic Leather





Joson-Care Enterprise Co., Ltd.

No.11, Aly. 77, Ln. 180, Hushan St., Guishan Dist., Taoyuan City 333024, Taiwan

☎ +886-3-329-0925

✉ overseas@joson-care.com.tw

🌐 www.joson-care.com

Taichung Office

1F., No. 280, Chengdu Rd., Xitun Dist.,
Taichung City 407403, Taiwan

TEL : +886-4-2316-0743

Tainan Office

No. 732, Sec. 1, Zhongzheng Rd., Rende Dist.,
Tainan City 717010, Taiwan

TEL : +886-6-266-2809



Document No.: JCQB-031
Release Date: 2024.06.01
Version: L